

Features

1. High-performance and reputable brand led chips and drivers.
2. Transparent polycarbonate lens, no risk of bulb damage, safe industrial application.
3. Optimized aluminum alloy shell design, outstanding performance in thermal management.
4. Lights up instantly without preheating.
5. No need to cool down before restarting.
6. High mechanical impact resistance and intrusion protection level.
7. Small size, easy to transport

options

- 1.Safety rope.
- 2.1-10V Dimming.
- 3.60/90/120degreelens.
- 4.Adjustable mounting bracket.
- 5.Microwave sensor available.

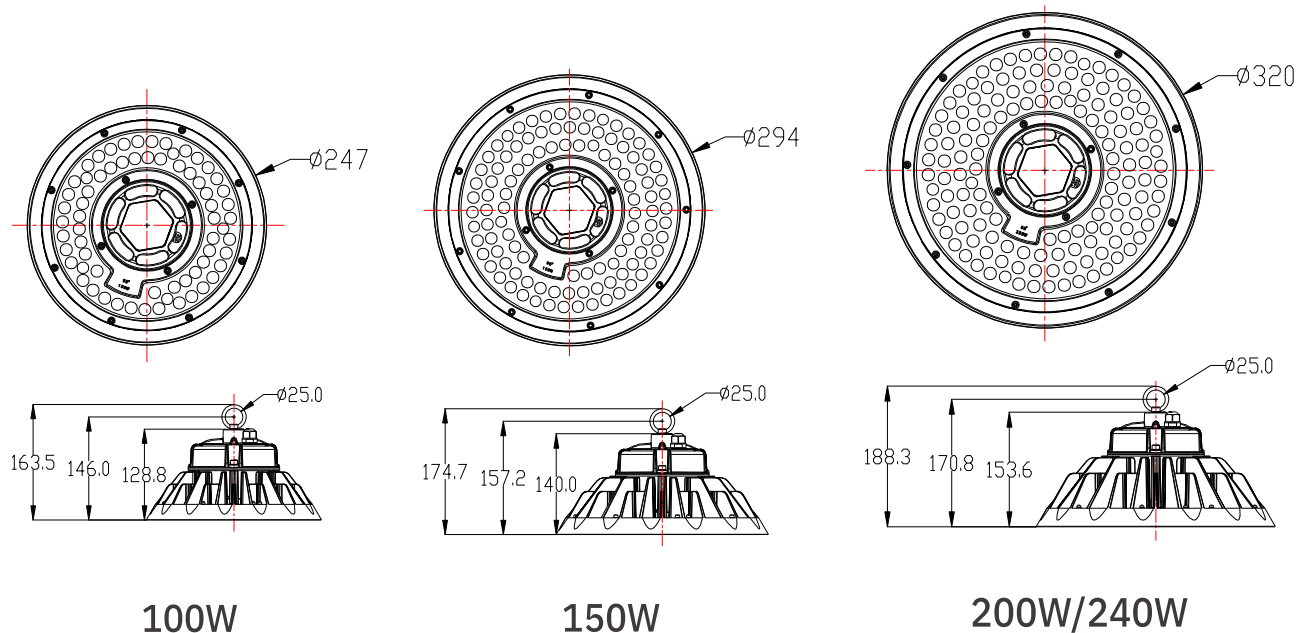


Specifications

Product model	E100W	E150W	E200W	E240W
Diameter	247MM	294MM	320MM	320MM
Height	163MM	174MM	188MM	188MM
Luminous Flux	14000lm to 36000lm			
Color temperature CCT(K)	2700K~6500K			
Chromogenic index (CRI)	80+			
Beam angle	60° / 90° / 120°			
Input voltage	AC100-277V			
Power factor	>0.95			
IP Rating	IP 65 and IK08			
Lifespan	50000Hrs			
Warranty	5 years			
Operation Temperature Range	-30° to+50° C			
Fixture Size	280*280*170MM	330*330*180MM	350*350*200MM	350*350*200MM
Net Weight(KG)	2.2KG	3.0KG	3.8KG	3.8KG
Gross Weight(KG)	2.7KG	3.5KG	4.2KG	4.2KG

Product Structure

Dimensions



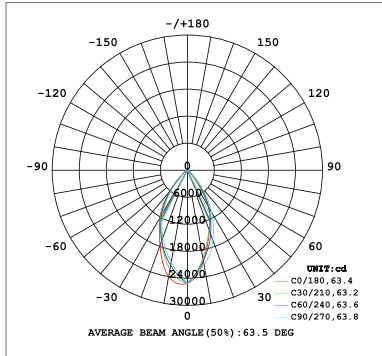
Ordering Information

Part No	Power	CCT	Flux	Dimming	Diameter	Height	Beam Angle
UFO-E100W	100W	2700-6500K	14,000-15,000lm	optional	247mm	163mm	60/90/120°
UFO-E150W	150W	2700-6500K	21,000-25,500lm	optional	294mm	174mm	60/90/120°
UFO-E200W	200W	2700-6500K	28,000-30,000lm	optional	320mm	188mm	60/90/120°
UFO-E240W	240W	2700-6500K	33,600-36,000lm	optional	320mm	188mm	60/90/120°

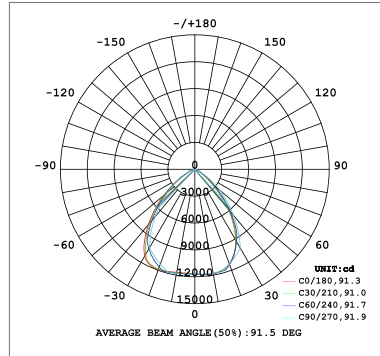
Model	Carton Size	N.W	G.W	QTY
UFO-E100W	280*280*170mm	2.2KG	2.7KG	1PCS
UFO-E150W	330*330*180mm	3.0KG	3.5KG	1PCS
UFO-E200W	350*350*200mm	3.8KG	4.2KG	1PCS
UFO-E240W	350*350*200mm	3.8KG	4.2KG	1PCS

Curve Distribution

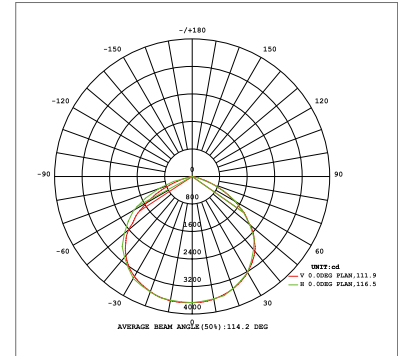
Photometric Diagrams



60°

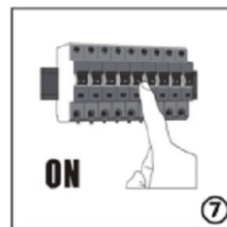
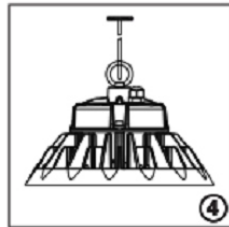
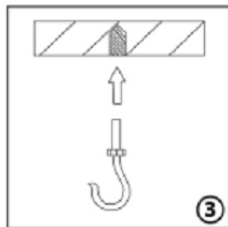
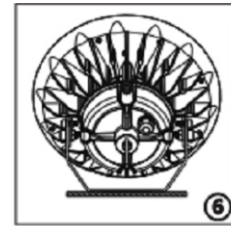
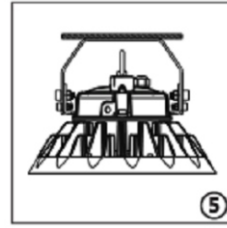
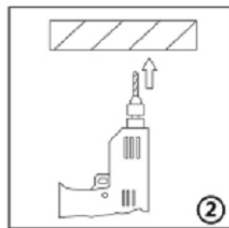


90°



120°

Installation&Application



Note: The installation base must be able to support 10 times weight of the products

1. Must have earth line in the right application!
2. After Earthing, must use insulation tape, insure the separating and water-proof.
3. Fastening the screw, in case it gets loose !
4. Input voltage not exceeding AC100~277V / DC24V!

After sale service

Response in 2 hours if you have any problem when you receive the goods.

Below condition is free of repairing.

- Damage due to faulty application and operation.
- Damage due to transportation.
- Damage due to self repairing.
- Damage due to natural disaster.